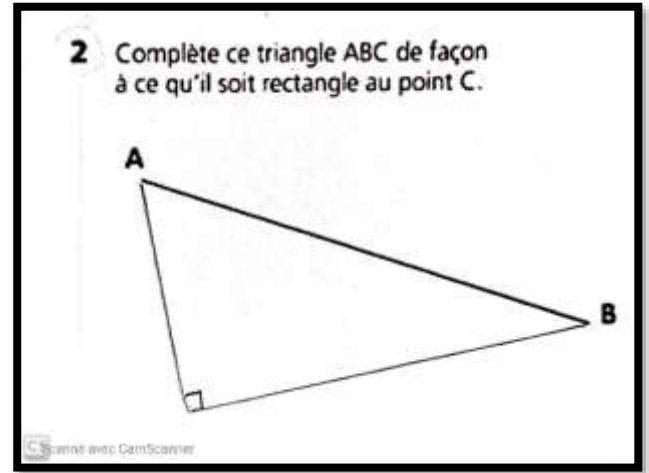
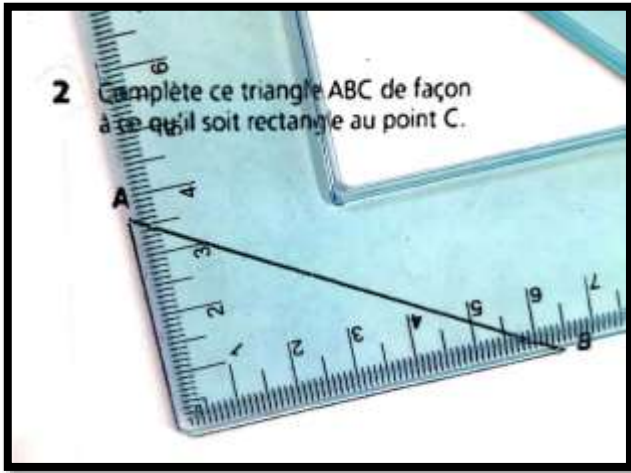
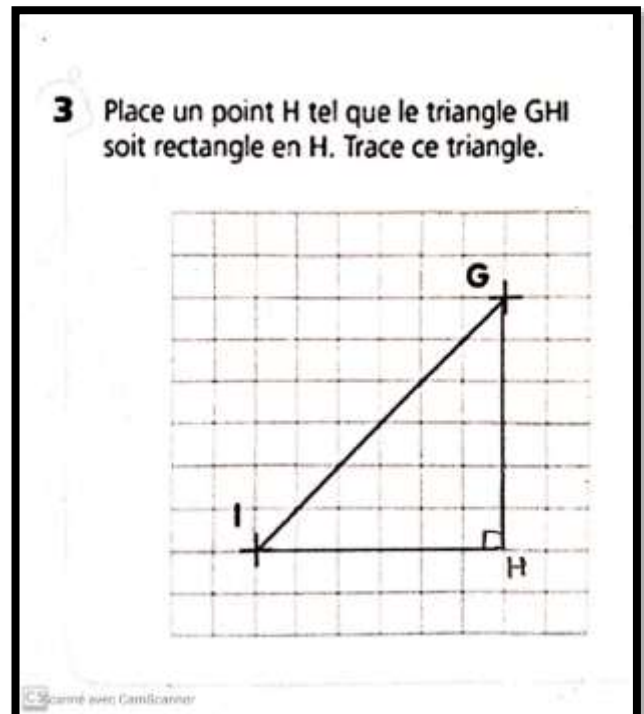
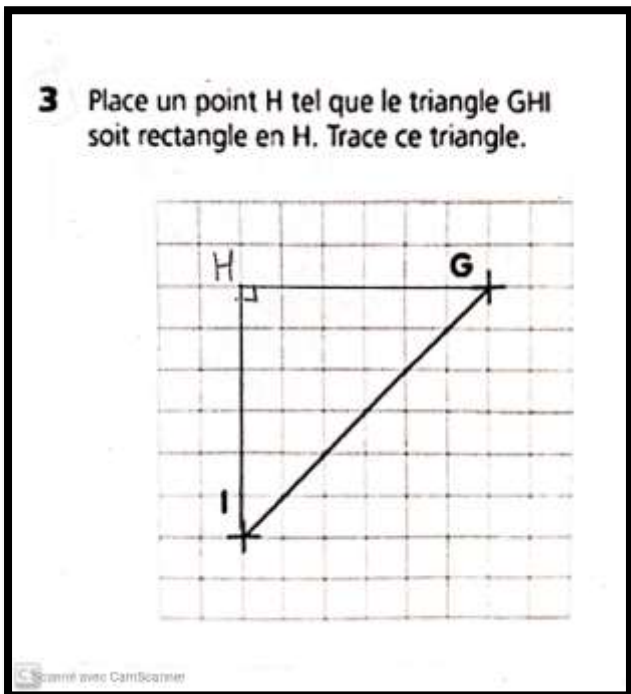


Exercice 2



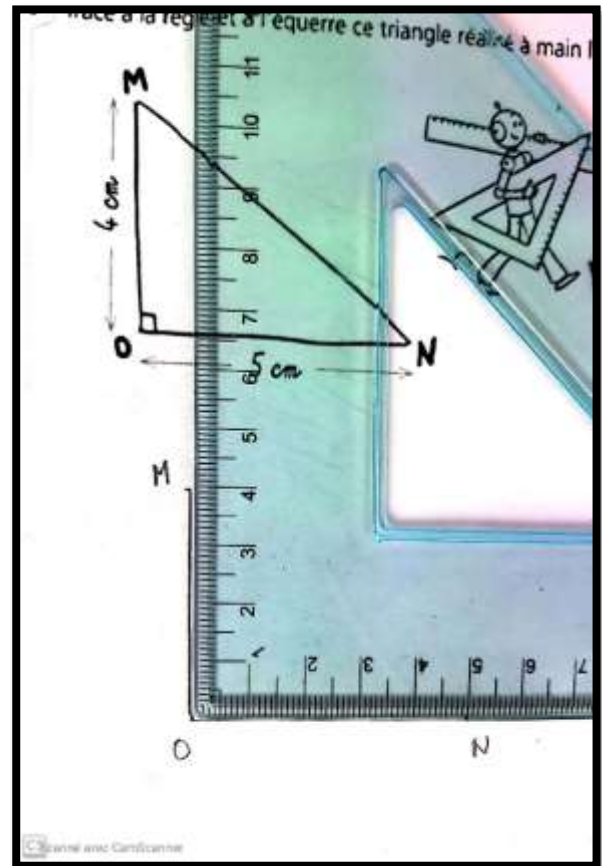
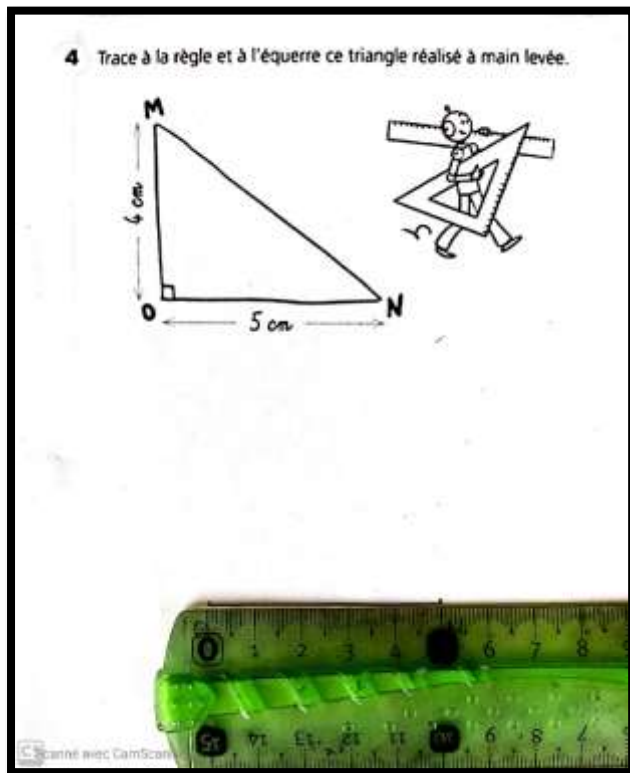
Il suffit de placer chaque côté de l'équerre sur chacun des points de la droite et de tracer les deux segments.

Exercice 3

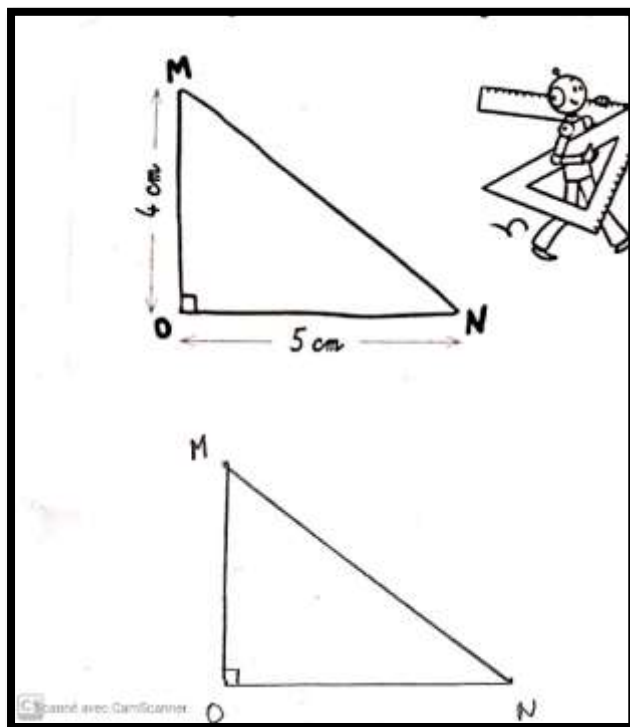


Deux solutions étaient possibles.

Exercice 4 :



On trace un segment de 5 cm . Puis, on trace une droite perpendiculaire. On place le point M à 5 cm .



Puis, on trace un segment qui relie le point M et le point N .